

MONTHLY MEMBERSHIP PROGRESS REPORT

District 4 C3

Results as of: 2/29/2024

GMT:

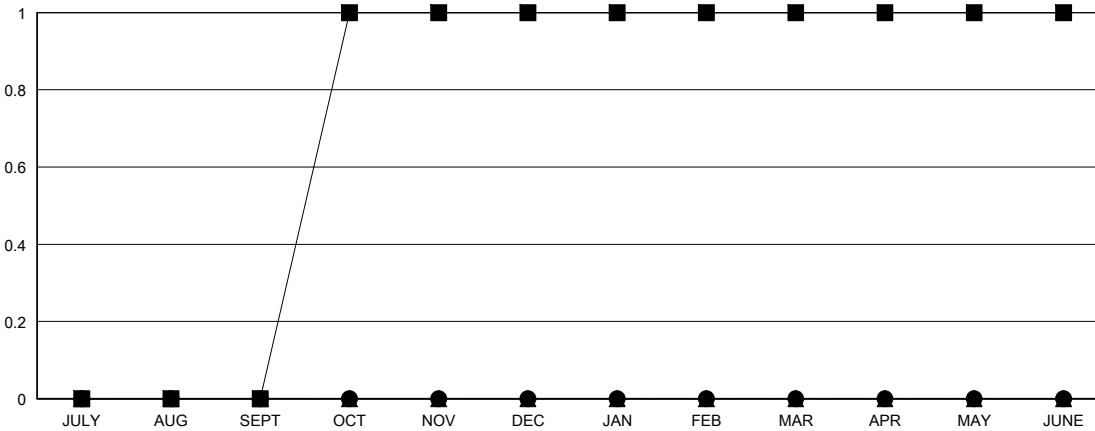
LOCATION CALIFORNIA

GMT CA

Clubs			
RESULTS FOR 2023-2024			
QUARTER	NEW CLUB GOAL	NEW CLUBS	DROPPED CLUBS
JULY/AUG/SEPT	0	0	1
OCT/NOV/DEC	1	0	0
JAN/FEB/MAR	0	0	1
APR/MAY/JUNE	0	0	0

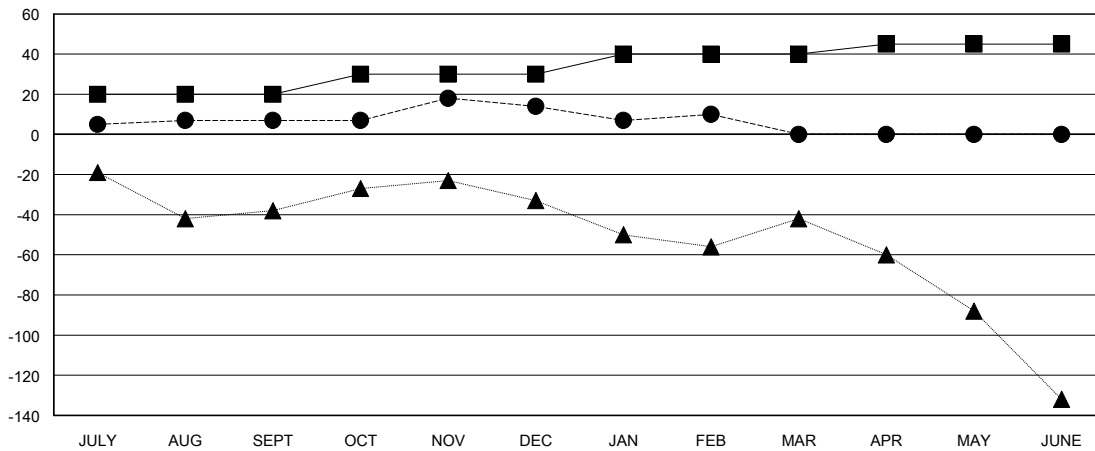
Members			
RESULTS FOR 2023-2024			
QUARTER	MEMBER GROWTH NET GOAL	MEMBER GROWTH ACTUAL	DROPPED MEMBERS ACTUAL (including transfers)
JULY/AUG/SEPT	20	53	44
OCT/NOV/DEC	10	35	26
JAN/FEB/MAR	10	21	22
APR/MAY/JUNE	5	0	0

GOALS AND ACTUAL NEW CLUBS CUMULATIVE



- - CURRENT YEAR GOALS FOR NEW CLUBS
- - CURRENT YEAR ACTUAL NEW CLUBS
- ▲ - LAST YEAR ACTUAL NEW CLUBS

GOALS AND ACTUAL MEMBERS CUMULATIVE



- - MEMBER GROWTH NET GOAL
- - MEMBER GROWTH ACTUAL
- ▲ - LAST YEAR MEMBERSHIP ACTUAL

DROPPED CLUBS: 2	21 CLUBS OF 40 ADDED 1 OR MORE NEW MEMBERS	GENDER DISTRIBUTION MALE 457 (49.46%) FEMALE 467 (50.54%)
DROPPED MEMBERS DECEASED 10 CLUB CANCELLED 12 OTHER 70 TOTAL 92	CLICK HERE FOR CUMULATIVE MEMBERSHIP DATA	TOTAL FAMILY UNIT MEMBERS 161 FAMILY MEMBERS PAYING HALF DUES 84